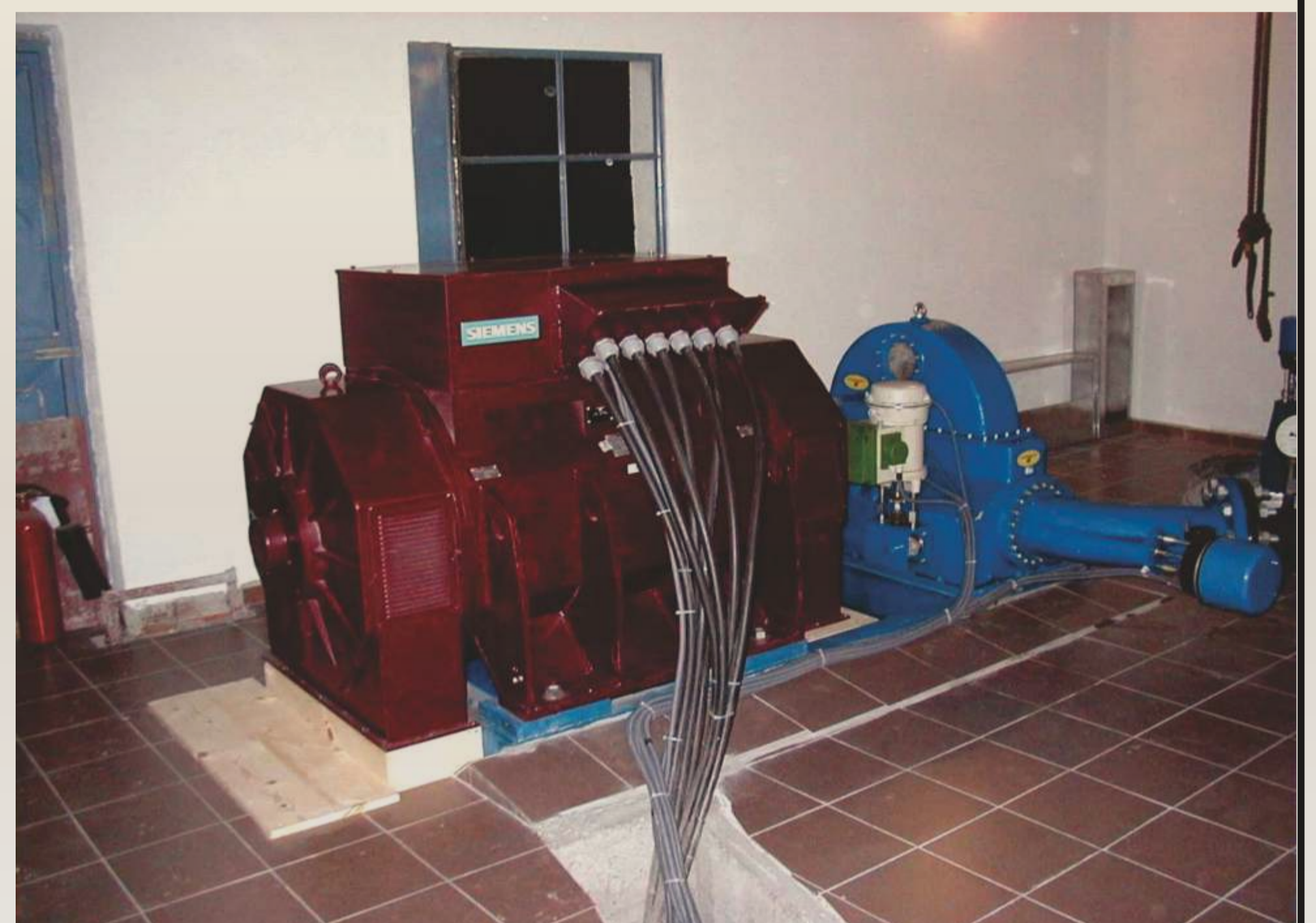
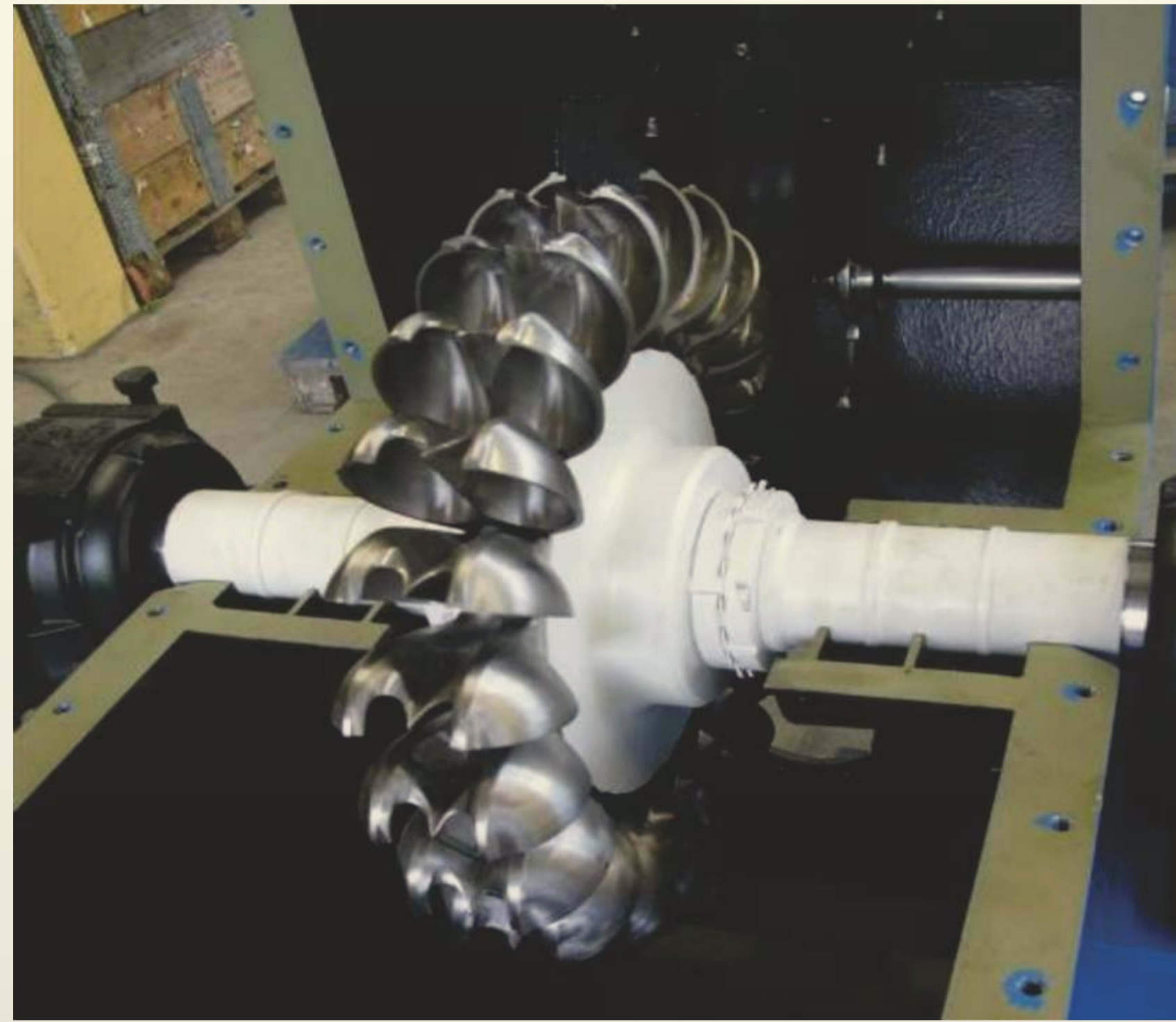
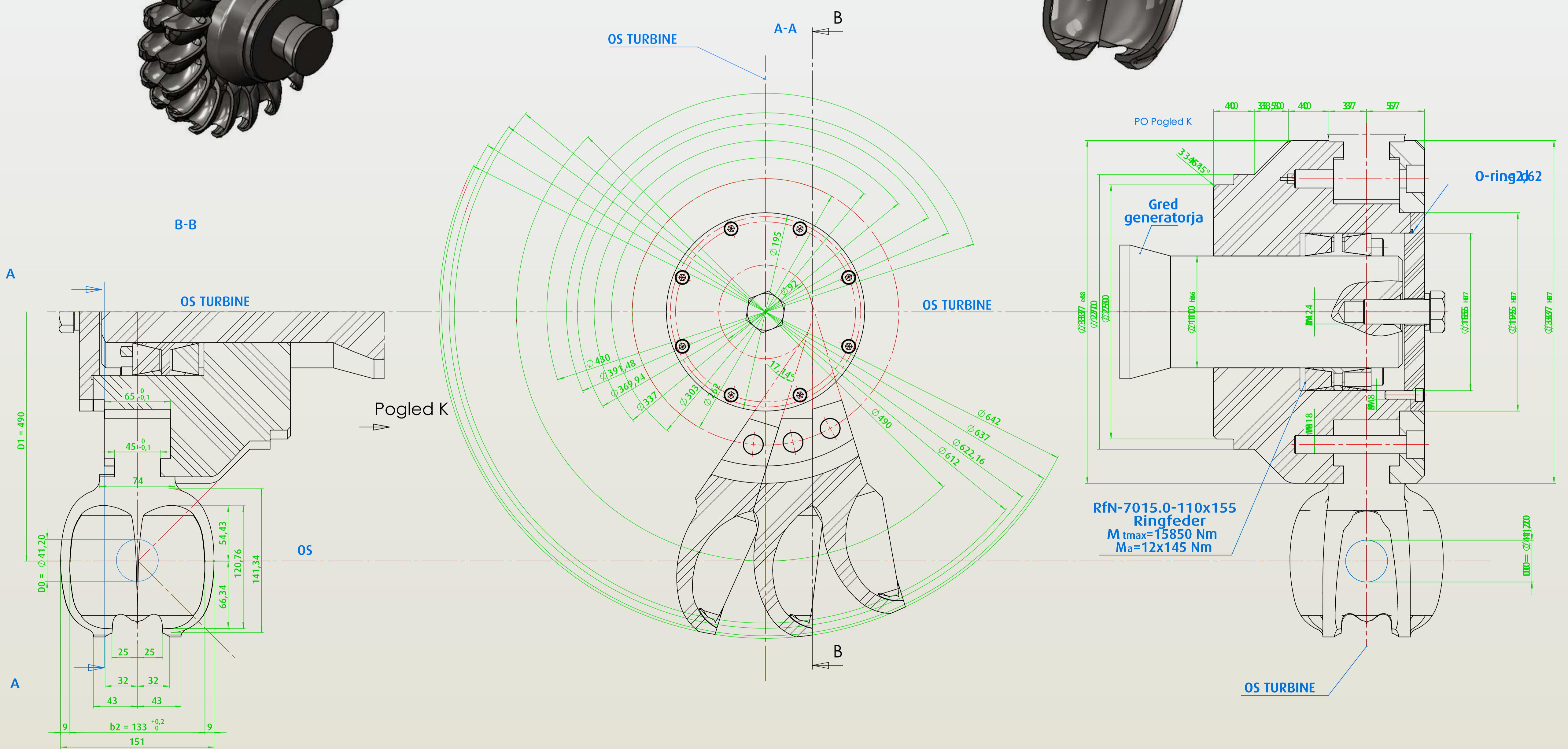




PELTON TURBINES Horizontal & Vertical



www.hydro-electricity.eu



Pr=172,5 kW
n=1000 rpm
Hn=143 m
Q=139 l/s
nj=2

Poz.	Naziv in mere	Kol.	Masa 1 kos	Material	Opomba	Nacrt
1	Vijak M8x30 DIN 912 (ISO 4762)	8	0.02	A2 70		
2	Vijak M18x110 DIN 912 (ISO 4762)	21	0.02	A2 70		
3	Vijak M24x55 DIN 933 (ISO 4017)	1	368.15	A2 70		
4	Podložka M24 DIN 7980	1	20.87	1.4301 (X3CrNiMo17-12-2)		
5	Gred turbine Ø 110x227,7	1	21.3	1.4313 (X3CrNiMo13-4)	0100-81-00-01	
6	Lopalice za Pelton turbina	21	4.44	1.4313 (X3CrNiMo13-4)	0100-81-00-02	
7	Pesto	1	64.1	1.4313 (X3CrNiMo13-4)	0100-81-00-03	
8	Pokrov pesto	1	10.2	1.4313 (X3CrNiMo13-4)	0100-81-00-04	
9	Pokrov	1	3.9	1.4313 (X3CrNiMo13-4)	0100-81-00-05	
10	Napajalna puša RfN 7015.0 110x155	1	4.36		RINGFEDER	

Poz.	Šifra	Naziv - oblika in dimenzije	Standard/Šifra	Gradivo	Kopov	Opomba	kg/kos
		Kvaliteta zavrhn					
		Šifra					
		Datum					
		Konst.					
		Pripr.					
		Stand.					
		Overst.					



0100-81-00-00

Št. risbe: 1
Listov: 1